

International Summer School in Institutions, Behavior and the Law

University of Hamburg
July 14th – August 8th

Institute of Law and Economics



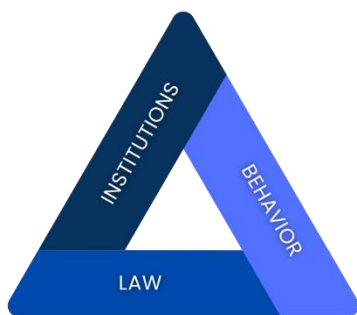
Universität Hamburg

DER FORSCHUNG | DER LEHRE | DER BILDUNG

The summer school “Institutions, Behavior and the Law” examines the interactions between institutional change and socio-economic norms of behavior in a society and their impact on legal issues. The aim is to examine the dynamic interactions between these areas and to create a deeper understanding of their mutual influences and interactions. This interdisciplinary summer school offers a unique opportunity to analyze complex societal processes and their impact on legal systems. The open approach of the summer school allows participants not only to identify current challenges and innovative perspectives, but also to actively participate in the design of new solutions.

Courses include:

- Introduction to Data Analysis and Empirical Methods
- Consequences of Political Institutions
- Methods in Computational Science
- Economics of Environmental Law



INTRODUCTION TO DATA ANALYSIS AND EMPIRICAL METHODS

This course provides an introduction to data analysis and empirical methods for students interested in applied research. Specifically designed as an introductory course, it does not require extensive prior knowledge of statistical analysis. The focus is strongly practical, emphasizing the application and intuition behind empirical methods. The techniques covered are particularly useful for empirical research in law and economics, and students will actively apply these methods in class. The course consists of two main pillars:

Text analysis: This (smaller) part of the course will show how text can be used as data. It covers the construction of word clouds, the analysis of frequencies of words, and the classification of text into topics. We will use the statistical software “Orange” for these analyses, which provides an intuitive and user-friendly surface of the programming language Python.

Empirical methods: This (more extensive) part of the course will cover empirical methods for applied research in law and economics. We will start by studying standard OLS and panel data models (Two-way Fixed Effects) and their limitations regarding the estimation of causal effects. We will then proceed by discussing methods to tackle these limitations, including instrumental variable (IV) methods, difference-in-differences approaches (DiD), event study designs, regression discontinuity designs (RDD), synthetic control methods (SCM), and experimental designs. We will use the software package Stata for these analyses.

Klaus Gründler is a Professor of Macroeconomics at the University of Kassel and Head of the Macroeconomics Unit at the Institute of Economics. He is also a Research Professor at the ifo Institute in Munich and a member of the CESifo Research Network. His research focuses on the causes and consequences of economic growth and inequality, particularly the role of individual expectations and economic policy measures. His research has been published in *Journal of Economic Behavior and Organization*, *Journal of Public Economics*, *European Economic Review*, *Journal of International Economics*, *European Journal of Political Economy*, and others.

JULY 21 - 25

PROF. NICLAS BERGGREN, RESEARCH INSTITUTE OF INDUSTRIAL ECONOMICS (IFN)/PRAGUE UNIVERSITY OF ECONOMICS AND BUSINESS

CONSEQUENCES OF POLITICAL INSTITUTIONS

This course presents a selection of research exploring the consequences of political institutions. Such institutions are “the rules of the political game”, which both enable and constrain political life. The course is organized on the basis of these eleven consequences: satisfaction of the public interest, growth and development, government size, taxation, property rights, environmental protection, life and voter satisfaction, personal freedom, female empowerment, integration, and income inequality. Among the political institutions affecting these are: democracy, direct democracy, democratic capital, the electoral system, the form of government, checks and balances, gender quotas, fiscal rules, the size of the legislature, and voting rules.

In addition to six lectures on the consequences listed above, in which it is explained how various political institutions are related to them, there is an introductory lecture presenting the main concepts and a concluding lecture focusing on whether institutions can and do change, as well as two colloquia during which the participants discuss the readings. The purpose of the course is to stimulate an interest in political institutions as a research program by showing that they matter for outcomes many of us care about.

Niclas Berggren is Associate Professor of Economics at the Research Institute of Industrial Economics (IFN), where he is the director for the research program Institutions, Markets and Enterprise. He is also at the Department of Economics at the Prague University of Economics and Business. His work has been published in Journal of Economic Behavior & Organization, Journal of Institutional Economics, Journal of Public Economics, European Journal of Political Economy, Public Choice, Kyklos, Journal of Comparative Economics, European Journal of Law and Economics, and others.

JULY 28 – AUGUST 1

MAHDI KHESALI & ELISA FRAILE ARANDA, Ph.D.

METHODS IN COMPUTATIONAL SCIENCE

Part 1: COMPUTATIONAL SOCIAL SCIENCE WITH FOCUS ON NLP

This course introduces students to the field of computational social science, with a particular emphasis on NLP techniques for social science research. Students will become familiar with computational methods and learn how to implement NLP techniques in the context of law and economics. The course is hands-on, requiring students to write their own code in Python. It is structured into three parts, combining lectures and exercises. The first part provides an overview of computational social science. The second part introduces students to the fundamentals of Python, equipping them with the skills to apply NLP techniques in their research. Each day concludes with a set of exercises that students must complete for the following session.

Part 2: LIME SURVEY EXPERIMENTAL ECONOMICS: A PRACTICAL PLAYBOOK

This hands-on workshop is an introduction to the use of LimeSurvey for experimental economic research. Together, we will dive into the coding and implementation of classic experimental games: the Dictator Game (DG), and the Public Goods Game (PG). We will explore how Lime works as a research tool, covering essential functionalities such as randomization, treatment assignments, and more. The course will be taught through interactive lectures, live demonstrations, hands-on exercises, and group activities. Participants will also complete assignments, such as creating and running their own small Lime-based experiment. By the end of the course, you will have the fundamental skills and confidence to design and execute basic experimental studies using LimeSurvey.

Mahdi Khesali is a Ph.D. candidate in Law at the University of Bonn and a Ph.D. candidate in economics at the University of Hamburg. He is affiliated with the Institute of Law and Economics at the University of Hamburg and is a guest researcher at the Max Planck Institute for Research on Collective Goods. His research focuses on legal theory as well as the deep determinants of economic growth. He is particularly interested in applying cutting-edge computational methods to address questions in these fields. His work has been published in the Journal of Legal Studies and the University of Chicago Law Review (Online).

Elisa Fraile Aranda is a Ph.D. holder in Economics. She has extensive experience in designing, conducting, and analyzing empirical studies in quantitative economic and social research. Her research has been published in Journal of Behavioral and Experimental Economics, Journal of Economic Psychology, and Journal of Population Economics. On top of her academic curriculum, she has started to gain experience in IT Consultancy.

AUGUST 4 – AUGUST 8

PROF. CHAHIR ZAKI & NADA MAAMOUN, Ph.D.

ECONOMICS OF ENVIRONMENTAL LAW

This course examines the evaluation of different environmental policies, focusing on common methods in economics with a specific focus on evaluating effectiveness of environmental policies in terms of impact (environmental and economic) and the role of different economic drivers. In addition, it analyzes the implications of environmental regulations on the global economy, with a special focus on the impact of environmental provisions in trade agreements (including the Carbon Border Adjustment Mechanisms) and environmental laws on trade and global value chains. It also sheds light on the cost of compliance.

Chahir Zaki is a chaired professor of economics at the University of Orléans and a research fellow at Laboratoire d'Economie d'Orléans. Chahir is also a member of the Economic Research Forum, a professor of economics at Cairo University. He has written numerous studies published in refereed journals on international trade, global value chains, environment, trade policy, and macroeconomic modeling. His papers have been published in *International Economics*, *World Development*, *Applied Economics*, *Review of Development Economics*, *World Trade Review*, and others.

Nada Maamoun is a postdoctoral associate at the Chair of Environmental and Resource Economics at Kiel University. Her research addresses questions on the effectiveness of international environmental policy and she is especially interested in climate change and air pollution mitigation. She applies empirical models to analyze the performance of IEAs, in specific those addressing climate change and transboundary air pollution and the role of collective action therein. Her research has been published in *Journal of Environmental Economics and Management*, *Renewable and Sustainable Energy Reviews*, *Nature Climate Change*, and others.

Application

The Summer School provides a seminar atmosphere with groups not larger than 25 participants. Therefore, the number of places for each course is limited. The courses are open to master's and doctoral students from Law, Economics and other Social Sciences. Interested students can apply for the entire Summer School or select individual courses from the program. To apply, please use the form on Hamburg University's conference platform: <https://www.conferences.uni-hamburg.de>

Application deadline is March 31.



Fees

Interested students can apply for the entire Summer School for € 160 or enroll in specific courses for €40 per course. Payment is required within two weeks after receiving the acceptance notification.

Materials and Housing

Reading materials will be made accessible free of charge online.

Please note that the University of Hamburg cannot assist participants in finding accommodation and financial support to attend the Summer School.

For updates on times and venues, please visit

www.ile-hamburg.de

UNLESS STATED OTHERWISE, COURSES WILL TAKE PLACE AT
THE UNIVERSITY OF HAMBURG **SEMINAR ROOM 1083A, VON-
MELLE-PARK 5**

Contact

Betül Simsek

Institute of Law and Economics,

Email: betuel.simsek@ile-hamburg.de

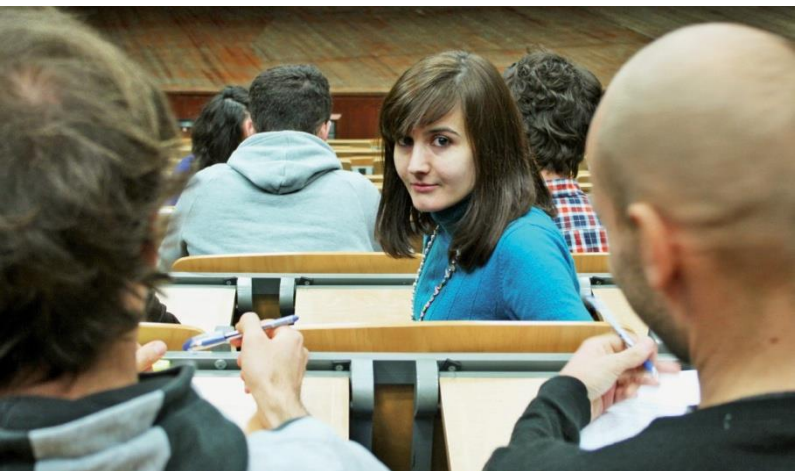
To direct questions regarding the summer school, please use:
summerschool@ile-hamburg.de

European Doctorate in Law and Economics

The European Doctorate in Law & Economics is one of the largest doctorate programs in the field of Law and Economics. It is a joint doctoral program by four of the leading European universities: the Universities of Bologna, Hamburg, Rennes 1 and Rotterdam. The stipend-based program aims at addressing a new class of outstanding PhD researchers from all over the world. The EDLE is sponsored by the DAAD. In Hamburg, the program is chaired by Prof. Dr. Stefan Voigt.

For more information, please visit

www.edle-phd.eu



DAAD

Deutscher Akademischer Austausch Dienst
German Academic Exchange Service

Master in Law & Economics of the Arab Region

The Master in Law and Economics (MLEA) is a joint programme between Faculty of Economics and Political Science (FEPS), Cairo University and Faculty of Law, Hamburg University. MLEA graduates receive an LL.M./M.A. from the Faculty of Law, Hamburg University (Specialization in Law). Egyptian Nationals receive additionally an M.Sc. from the Faculty of Economics and Political Science, Cairo University (Specialization in Economics). The programme, with its courses provides students with necessary tools to explain the behaviour of legislators, prosecutors, judges, bureaucrats and other actors using the economic methodology.

For more information, please visit

<https://mlea-studies.org/>



DAAD

Deutscher Akademischer Austausch Dienst
German Academic Exchange Service

Funded by

University of Hamburg

Hamburg International Summer School

Department of International Affairs

The Hamburg International Summer School (HISS) is a short international summer program that was offered at Universität Hamburg for the first time in 2017 and has been held annually ever since. The summer school contributes to the positioning of University of Hamburg on the international education market and aims to attract qualified foreign students and doctoral candidates as well as to increase the attractiveness of Hamburg as a study and research location. It also serves the intercultural exchange on the current research situation and the expansion of international research cooperation.

For more information, please visit

<https://www.uni-hamburg.de/internationales>



Universität Hamburg

DER FORSCHUNG | DER LEHRE | DER BILDUNG